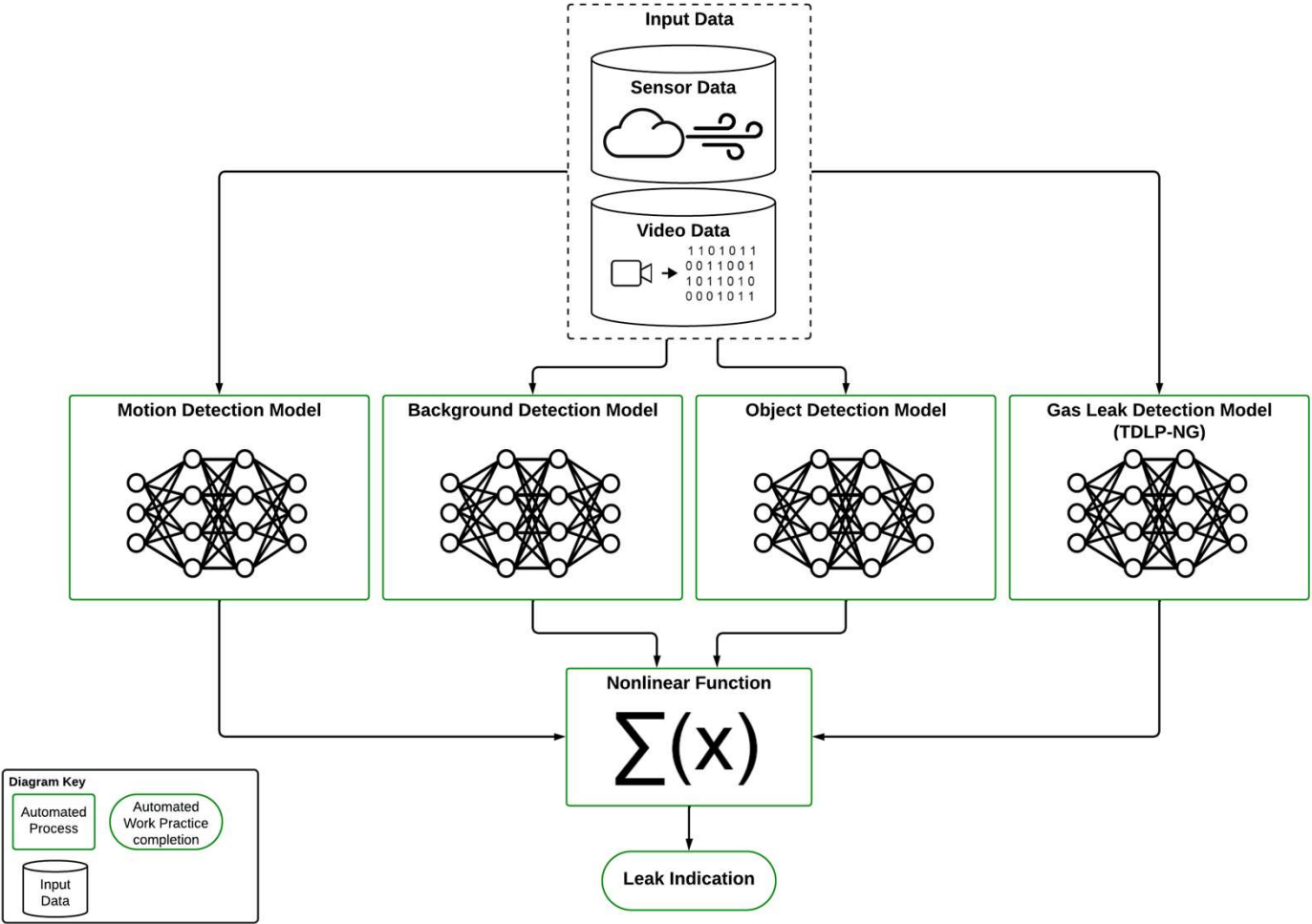


CleanConnect LeakFinder Periodic Screening:
Data Processing and Manipulation Work Practice



Definitions:

Tour: When the CleanConnect LeakFinder OGI Camera has rotated the entire 360° in its observational path and completed all planned observations, it has completed a tour.

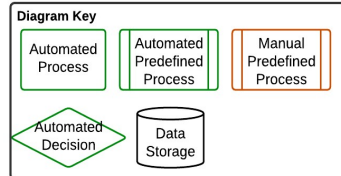
Tour Stop: Each tour is composed of a certain number of tour stops. A tour stop is the process of the CleanConnect LeakFinder OGI Camera observing a predefined field of view for a set duration of time (a minimum of 2 minutes).

Potential Event: Any visual emission event the CleanConnect LeakFinder system has identified and has persisted for more than 20 seconds (no longer than 20 seconds elapse between detection during a given tour stop).

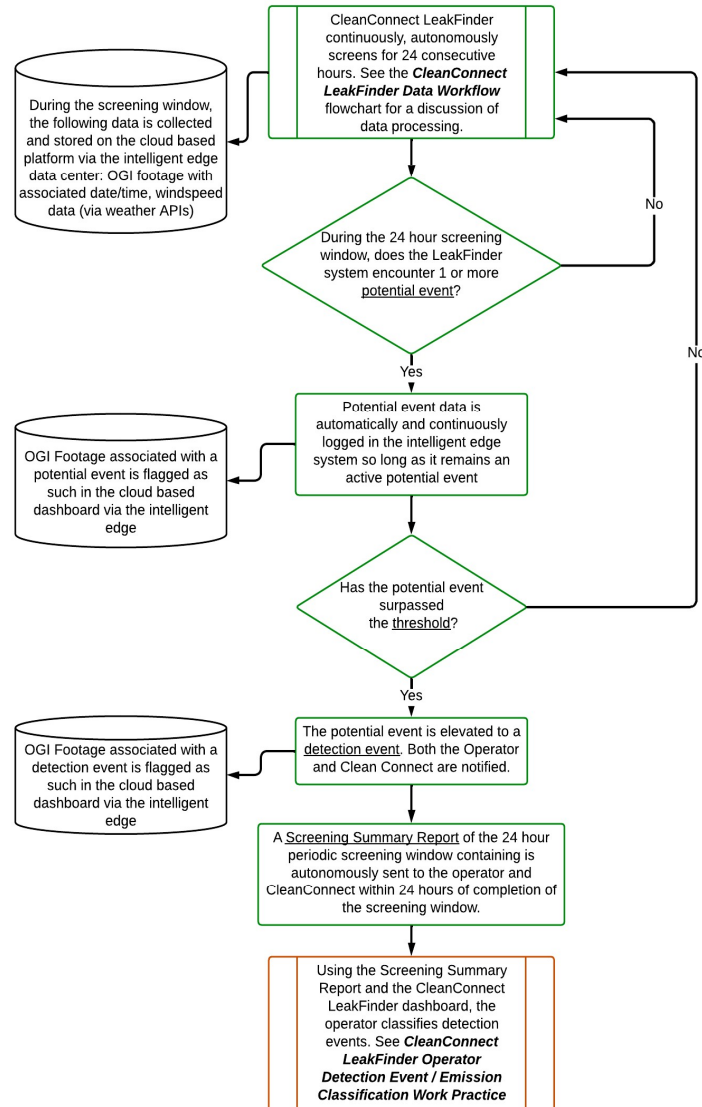
Threshold: The threshold is surpassed when a potential event has been persistently observed for 4 hours with no more than 1 break in observation (if the CleanConnect LeakFinder system passes through two consecutive tours without "seeing" a potential detection, it is no longer a potential event).

Detection Event: A potential event that surpasses the threshold (referred to as a "confirmed detection" in 40 CFR 60.5398b). Once a potential event is elevated to a detection event the operator and CleanConnect are alerted via email to its presence. In addition, after the 24 hour screening window, the operator and CleanConnect receive a summarized report of all detection events encountered which can be used for EPA reporting requirements. Detection Events are also logged and accessible through the CleanConnect LeakFinder dashboard.

Screening Summary Report: A report automatically provided to CleanConnect and the operator. The report will contain all data necessary for the operator to fulfill the reporting requirements of 40 CFR 60.5424b. Including: Date of screening, results (Detection events, emitting equipment group, etc.), and method and technology used. Fields will be present in the report which can be easily filled in upon completing the Emissions Classification Work Practice (See *Operator Detection Event / Emission Classification Work Practice* flowchart) including the classification of emissions associated with detection events, and details of Follow-up OGI information. Alternatively, operators can use the screening summary report in combination with internal tracking systems to meet 40 CFR 60.5424b reporting requirements.



Clean Connect LeakFinder Periodic Screening: Autonomous OGI Screening Work Practice



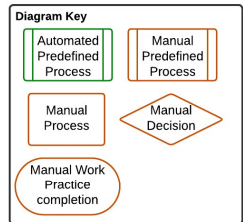
Definitions:

Trained and qualified: The operator(s) conducting the emission classification must be trained in both interpreting CleanConnect LeakFinder OGI footage and associated data as well as qualified to understand all routine operations at the monitored site. CleanConnect and the operator will work collaboratively to ensure there is an established trained and qualified operator who takes ownership of emissions classification after the 24 hour screening window has concluded.

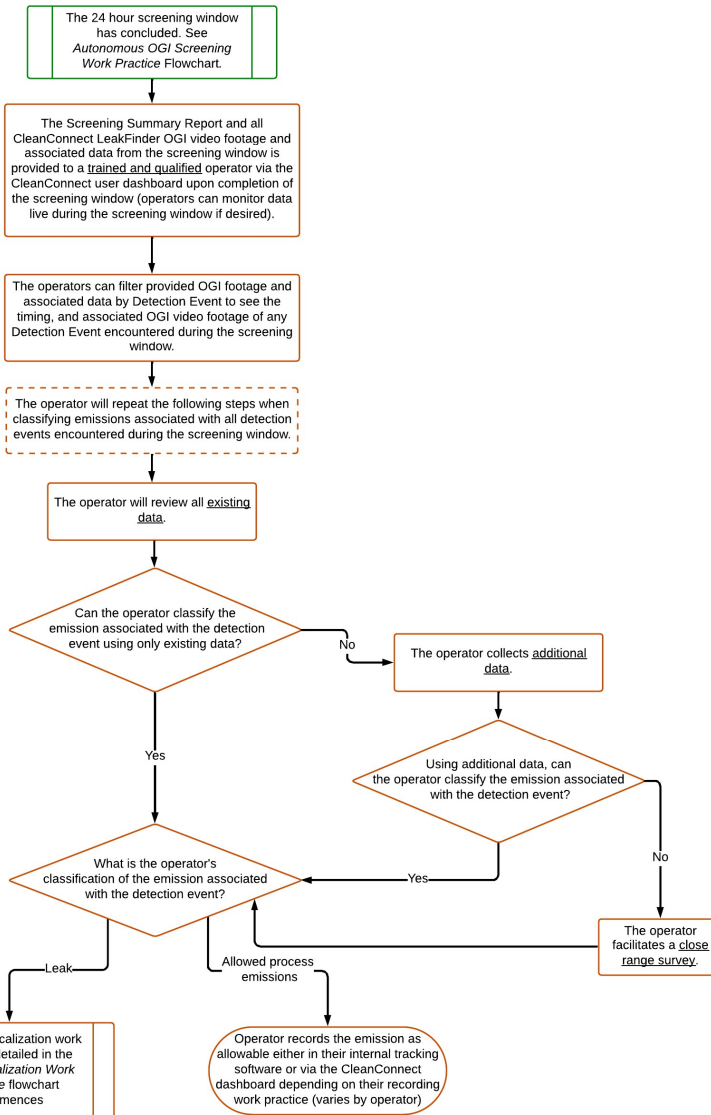
Existing data: This includes the CleanConnect LeakFinder OGI footage, SCADA data if available, knowledge of known allowed process emissions or emissions from regulated sources (e.g., blowdowns), etc. Often, the operator can classify the emission associated with a detection event with only existing data. Furthermore, the Clean Connect OGI footage alone is often sufficient material for an operator classifying an emission as a leak or a known allowable emission.

Additional data: Data collected by the operator to aid in emission event classification. This could include an investigation into activities at the facility the operator is not immediately aware of (e.g., vacuum/pumping truck operations). This can also include the use of the **CleanConnect LiveLook** feature which will allow the operator to manually position the OGI camera to better diagnose the emission associated with the detection event.

Close Range Survey: An OGI or Method 21 inspection following EPA CFR 60.5397b. A close range inspection may be necessary in cases where the OGI footage of a detection event shows the emission plume but not the source.



CleanConnect LeakFinder Periodic Screening: Operator Detection Event / Emission Classification Work Practice



CleanConnect LeakFinder Periodic Screening: Leak Localization Work Practice

